

*lumi*air
by BOWENS

www.bowens.co.uk

BWL-0610. 'Bowens'® and 'the power behind the picture'® are registered trademarks of Bowens International Ltd. Bowens International Ltd. have a policy of continual product development and improvement. Bowens reserves the right to change or modify any specifications at any time and without notice.

BOWENS
the power behind the picture

*lumi*air



USER GUIDE

CONTENTS	PG	INTRODUCTION	SAFETY NOTES
INTRODUCTION	1	Thank you for choosing the Bowens Lumiair range of professional softboxes.	All Bowens Lumiair softboxes and Octaboxes are designed for use with a flash unit to a limit of 3000Ws, HMI to a limit of 575W and Tungsten to a limit of 650W when used with a fan-cooled light source.
SAFETY NOTES	1		
INCLUDED IN BOX	1	Bowens Lumiair softboxes have been designed by working closely with photographers to develop a softbox that meets the standards demanded in today's professional studios.	Ensure that the internal diffuser (if fitted) cannot come into contact with the light source.
CASTING ASSEMBLY	2-3		
QUICKRING	3		
LUMIAIR ASSEMBLY	4-8	For details of all related products, please contact your local distributor; a list of which can be found at www.bowens.co.uk	
LUMIAIR DISASSEMBLY	8		
LUMIAIR EGG CRATES	9	In order to obtain the full benefit from your purchase, please take a few moments to familiarise yourself with this user guide.	
LUMIAIR RANGE	10-11	Bowens International Ltd.	
			INCLUDED IN BOX
			<ul style="list-style-type: none"> • Canopy • Rear Cowl • Support Rods • Front Diffuser • Speedring • S-type adaptor • Carry Bag • Internal diffuser

CASTING ASSEMBLY

The Softbox casting consists of two main components, the Bowens S-type adaptor (1) and the Speedring (2).



CASTING ASSEMBLY - STEP ONE

Remove all brass thumb screws from the Speedring along with the upper nylon washers; leaving the lower nylon washers and spring in place (as shown below).



CASTING ASSEMBLY - STEP TWO

Place the S-type adaptor inside the ring of the Speedring as shown below.



CASTING ASSEMBLY - STEP THREE

Pull the S-type adaptor and the Speedring together, and replace all of the nylon washers and brass thumb screws.



CASTING ASSEMBLY - STEP FOUR

Once all of the nylon washers and brass thumb screws have been replaced your softbox casting should appear as shown below.



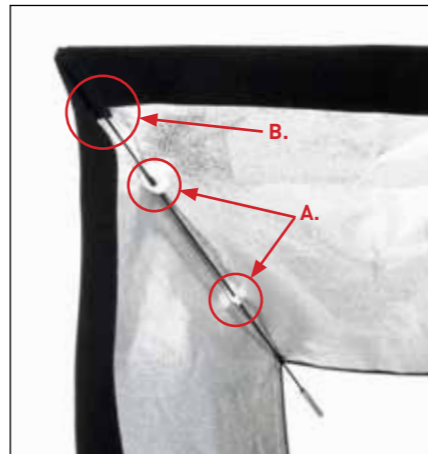
ALTERNATIVE CASTING - QUICKRING

The Bowens Quickring (part code BW3110) has been designed to make assembling and disassembling softboxes easy. To assemble your softbox first unlock the Quickring, insert all four rods as usual then simply click the Quickring release back in place. To disassemble just release the latch, move the casting forward and remove the rods.



SOFTBOX ASSEMBLY - STEP ONE

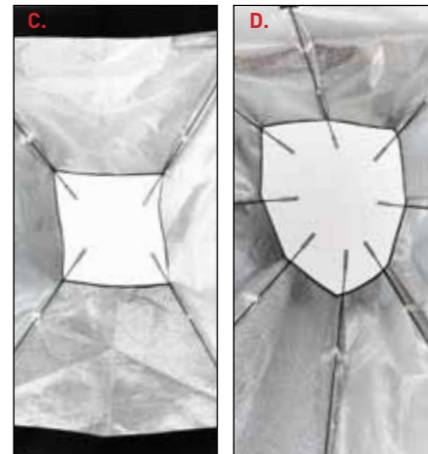
First, insert a single rod through two retaining loops (A) on one of the inside corners of the softbox, and then into the rod pocket (B) as shown.



SOFTBOX ASSEMBLY - STEP TWO

Repeat Step One for the remaining rods until your softbox appears as shown.

**Square and Rectangular softboxes (C).
Octagonal softboxes (D).**

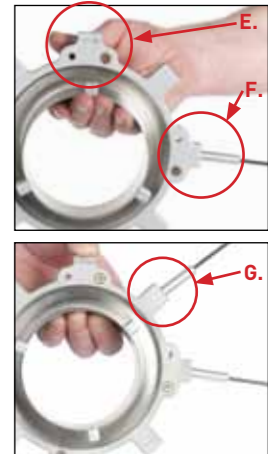


SOFTBOX ASSEMBLY - STEP THREE

Next, hold your assembled speedring and S-type adaptor with the 'I-Concept' rod support mount (E) facing towards you.

Square and Rectangular softboxes: Insert the first rod into the support mount second left (F) of the 'I-Concept'. Continue using every second support mount for a further 2 rods.

Octagonal softboxes: Insert the first rod into the mount directly left (G) of the 'I-Concept'; continue using each support mount on the S-type adaptor.



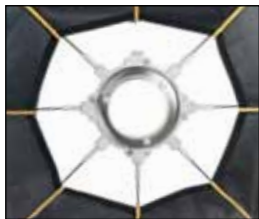
SOFTBOX ASSEMBLY - **STEP FOUR**

Repeat 'Step Three' going in a clockwise direction until your softbox assembly appears as shown.

Square and Rectangular softboxes.



Octagonal softboxes.



SOFTBOX ASSEMBLY - **STEP FIVE**

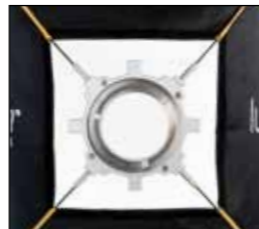
The final rod inserted into the casting should be placed into the 'I-Concept' support mount (H).



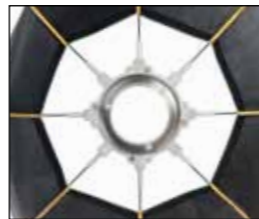
SOFTBOX ASSEMBLY - **STEP SIX**

Once all rods are inserted into the casting, your softbox should appear as shown.

Square and Rectangular softboxes.

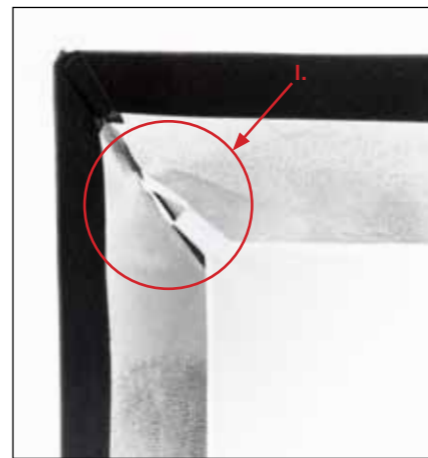


Octagonal softboxes.



SOFTBOX ASSEMBLY - **STEP SEVEN**

When the main canopy is assembled, attach the 'inner-diffuser' using the fastening strips on the corners of the diffuser (I), attaching them to the outer retaining loops of the softbox.



SOFTBOX ASSEMBLY - **STEP EIGHT**

Once the 'inner-diffuser' is attached, place the 'Front-Diffuser' around the front edge of the assembled softbox; ensuring the 'Front-Diffuser' is securely in place using the hook and loop strips.



SOFTBOX ASSEMBLY - **STEP NINE**

Place your softbox onto a flash unit.



SOFTBOX ASSEMBLY - **STEP TEN**

Finally attach the 'Rear Cowl' (J) over the back of the softbox to complete your assembly.



SOFTBOX ASSEMBLY - **STEP ELEVEN**

Your assembled softbox should appear as shown.

Square and Rectangular softboxes.



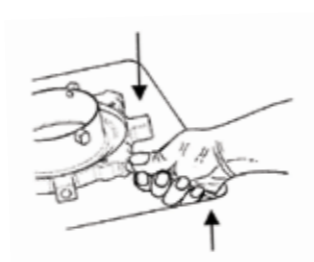
Octagonal softboxes.



SOFTBOX DISASSEMBLY

Disassembling a softbox is the reverse procedure of assembly. When removing the rods from the casting, the rod in the marked tension hole (I-Concept) should be removed first. This is because the hole marked 'I-Concept' has a stepped recess on the inside which makes it easier to remove the first rod.

To ease the rod out of the hole apply pressure to the rod in the directions indicated (see diagram below) and pull away from the casting.



LUMIAIR RANGE - OPTIONAL **EGGCRATE ASSEMBLY**

EGG CRATE ASSEMBLY - **STEP ONE**

Set the softbox onto a flash head with the front diffuser facing towards you.



EGG CRATE ASSEMBLY - **STEP TWO**

Step two is only necessary if you have chosen to use the optional 'Egg Crate Stretch Frame'.

Assemble the stretch frame and attach to the outer-most part of the hook and loop strip on the inside of the softbox.



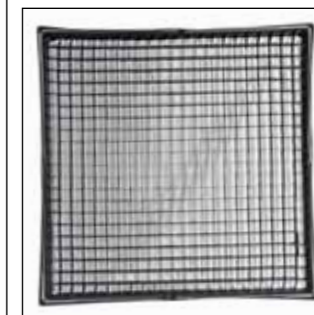
EGG CRATE ASSEMBLY - **STEP THREE**

Next, attach the Egg Crate to the inside of the stretch frame as shown below.



EGG CRATE ASSEMBLY - **STEP FOUR**

Finally, your assembled softbox and Egg Crate should appear as shown below.



LUMIAIR RANGE - SQUARE AND RECTANGULAR SOFTBOXES

60x80cm (23.5" x 31")
Part Code: BW1500

The rectangular shape of the 60x80cm lumiair makes it perfect for portraiture.



SPARE PARTS
Rod: BW1502
Inner Diffuser: BW1503
Front Diffuser: BW1504

80x100cm (31" x 39.5")
Part Code: BW1505

For larger portraits or when a softer light is required.



SPARE PARTS
Rod: BW1507
Inner Diffuser: BW1508
Front Diffuser: BW1509

100x100cm (39.5" x 39.5")
Part Code: BW1510

One of our most popular sizes; suitable for a wide range of photography.



SPARE PARTS
Rod: BW1512
Inner Diffuser: BW1513
Front Diffuser: BW1514

100x140cm (39.5" x 55")
Part Code: BW1515

Ideal for large group shots and commercial photography as well as room sets or just when a very soft light is required.



SPARE PARTS
Rod: BW1517
Inner Diffuser: BW1518
Front Diffuser: BW1519

40x100cm (15.75" x 39.5")
Part Code: BW1520

The narrow profile of the strip softbox gives a much sharper cut-off, making it ideal for fashion and beauty.



SPARE PARTS
Rod: BW1522
Inner Diffuser: BW1523
Front Diffuser: BW1524

40x140cm (15.75" x 55")
Part Code: BW1525

The larger dimensions of the Softstrip 140 makes it ideal for full length fashion and beauty photography.



SPARE PARTS
Rod: BW1527
Inner Diffuser: BW1528
Front Diffuser: BW1529

LUMIAIR RANGE - OCTAGONAL SOFTBOXES

Octabox 90cm
Part Code: BW1530

Great for portraits. Also provides increased contrast when used further away from subject for 3/4 length shots.



SPARE PARTS
Rod: BW1532
Inner Diffuser: BW1533
Front Diffuser: BW1534

Octabox 120cm
Part Code: BW1535

The perfect Octa softbox for photographing single or small group portraits.



SPARE PARTS
Rod: BW1537
Inner Diffuser: BW1538
Front Diffuser: BW1539

Octabox 140cm
Part Code: BW1540

Provides a beautiful soft and even light output for any subject. Perfect for larger group portraits.



SPARE PARTS
Rod: BW1542
Inner Diffuser: BW1543
Front Diffuser: BW1544

LUMIAIR RANGE - EGG CRATES: PARTS AND ACCESSORIES

Square and Rectangular Softboxes

60x80cm - 40° Egg Crate: **BW1501**
80x100cm - 40° Egg Crate: **BW1506** - Egg Crate Stretch Frame: **BW1545**
100x100cm - 40° Egg Crate: **BW1511** - Egg Crate Stretch Frame: **BW1546**
100x140cm - 40° Egg Crate: **BW1516** - Egg Crate Stretch Frame: **BW1547**

Strip Softboxes

40x100cm - 40° Egg Crate: **BW1521** - Egg Crate Stretch Frame: **BW1548**
40x140cm - 40° Egg Crate: **BW1526** - Egg Crate Stretch Frame: **BW1549**

Octa Softboxes

90cm - 40° Egg Crate: **BW1531**
120cm - 40° Egg Crate: **BW1536** - Egg Crate Stretch Frame: **BW1550**
140cm - 40° Egg Crate: **BW1541** - Egg Crate Stretch Frame: **BW1551**

Bowens boasts one of the largest range of lighting products available today. For a full list of all Bowens studio and location lighting products visit the website at:

www.bowens.co.uk